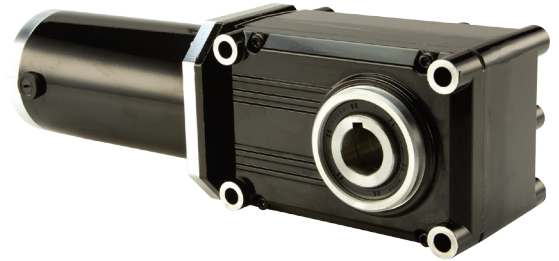


## Maximum Efficiency Right-angle Gearmotors

### 720 PMDC 90V

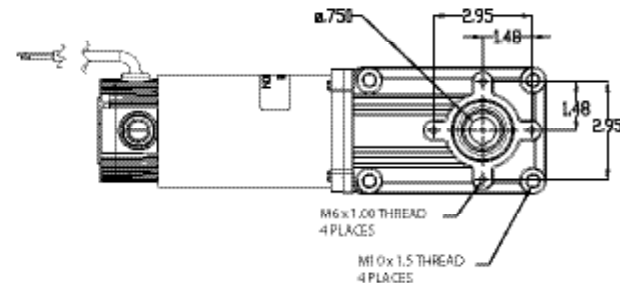
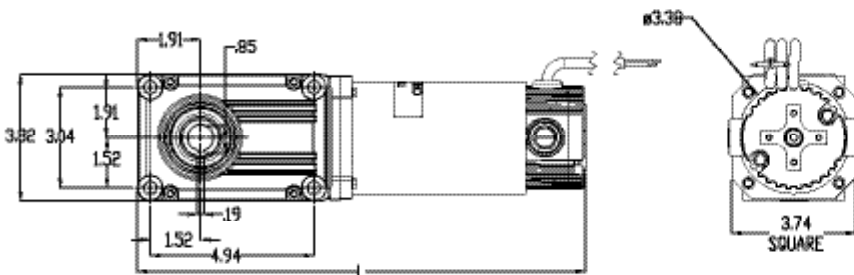
PowerSTAR® 720 Series PMDC 90V right-angle gearmotor offers up to 442 in-lbs of torque running continuously for energy efficient operation in a sleek, compact profile. Uses a 32 Frame TENV PMDC motor with 36" cordset.



#### 720 Series PMDC 90V Gearmotor - TENV

Part Number	Speed (RPM)	Rated Torque (in-lbs)	Input HP	Gear Ratio	OHL (lbs)	Amps
021-720D0010	180	35	1/8	10	270	1.6
021-720D0015	120	52	1/8	15	305	1.6
021-720D0020	90	70	1/8	20	330	1.6
021-720D0030	60	104	1/8	30	370	1.6
021-720D0040	45	139	1/8	40	400	1.6
021-720D0050	36	173	1/8	50	430	1.6
021-720D0060	30	208	1/8	60	455	1.6
021-720D0080	23	277	1/8	80	490	1.6
021-720D0100	18	346	1/8	100	525	1.6
021-720D0120	15	415	1/8	120	550	1.6
021-720D0150	12	277	1/15	150	635	0.8
021-720D0180	10	332	1/15	180	670	0.8
021-720D0240	7.5	442	1/15	240	725	0.8

See accessories on page 16



L  
L = Gearmotor length:  
1/8 HP: 13.57  
1/15 HP: 11.91

DC GEARMOTOR  
WHITE +LINE  
BLACK -LINE  
GREEN GROUND  
To reverse rotation interchange white and black leads